

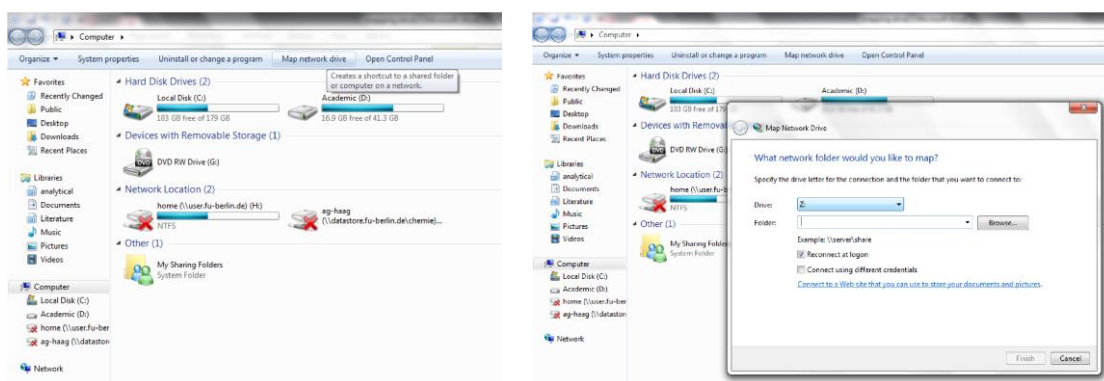
How-to map the BCP-storage network drive on your PC

Preamble. Measurement data, especially if they accumulate in large quantities, are stored on a specialised network drive.¹ The data are usually stored in a file directory tree named according to the device used.

Before you can access this BCP-storage network drive, you have to be registered at the MI-portal. Ask your IT manager to give you access to the network drive by providing your ZEDAT account name! You also need access to the corresponding device. Usually, the respective device manager provides this access.

Under MS Windows you can map the drive as a network drive according to the following instructions. Go to “my computer”

- Right mouse click on “my computer” and select “map network drive”



- Type folder path as: `\\bcp-storage01.imp.fu-berlin.de\ag-<lab>`
<lab> = name of the PI
- Enable “connect using different credentials”; then “Finish”
- The system now requires your username and password
 - User name: `FU-BERLIN\<zemat-account>`
<zemat-account> = your zemat account without `@zemat.fu-berlin.de`
Password is your ZEDAT account password
- Save your data
- Disconnect the network drive by right click on the drive name and choose “Disconnect”

If you are not in the university (ZEDAT) network you have to connect your computer via VPN to the ZEDAT network before; see https://www.zemat.fu-berlin.de/Tip4U_VPN (in german).

¹ Please note that the storage is currently still free of charge, but may be charged the future.