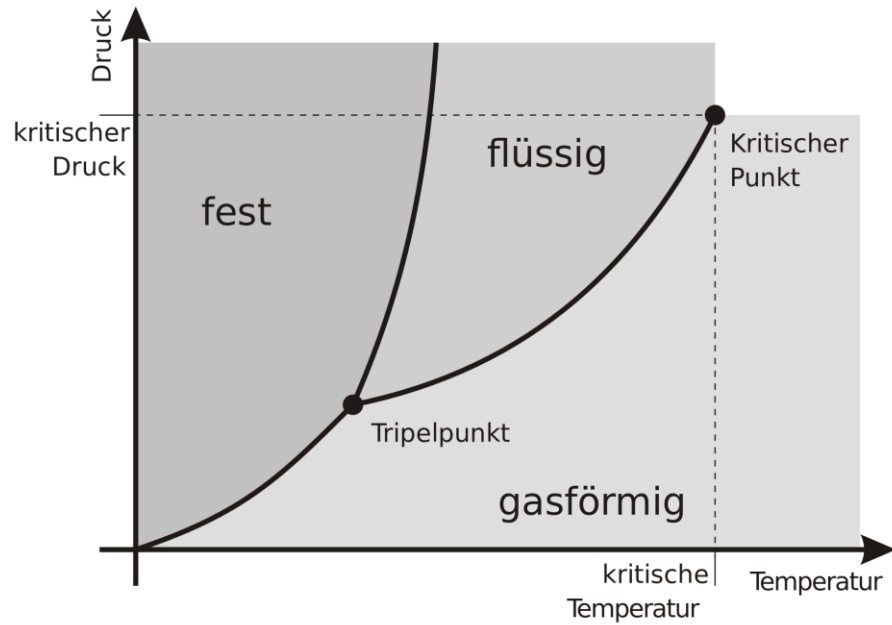
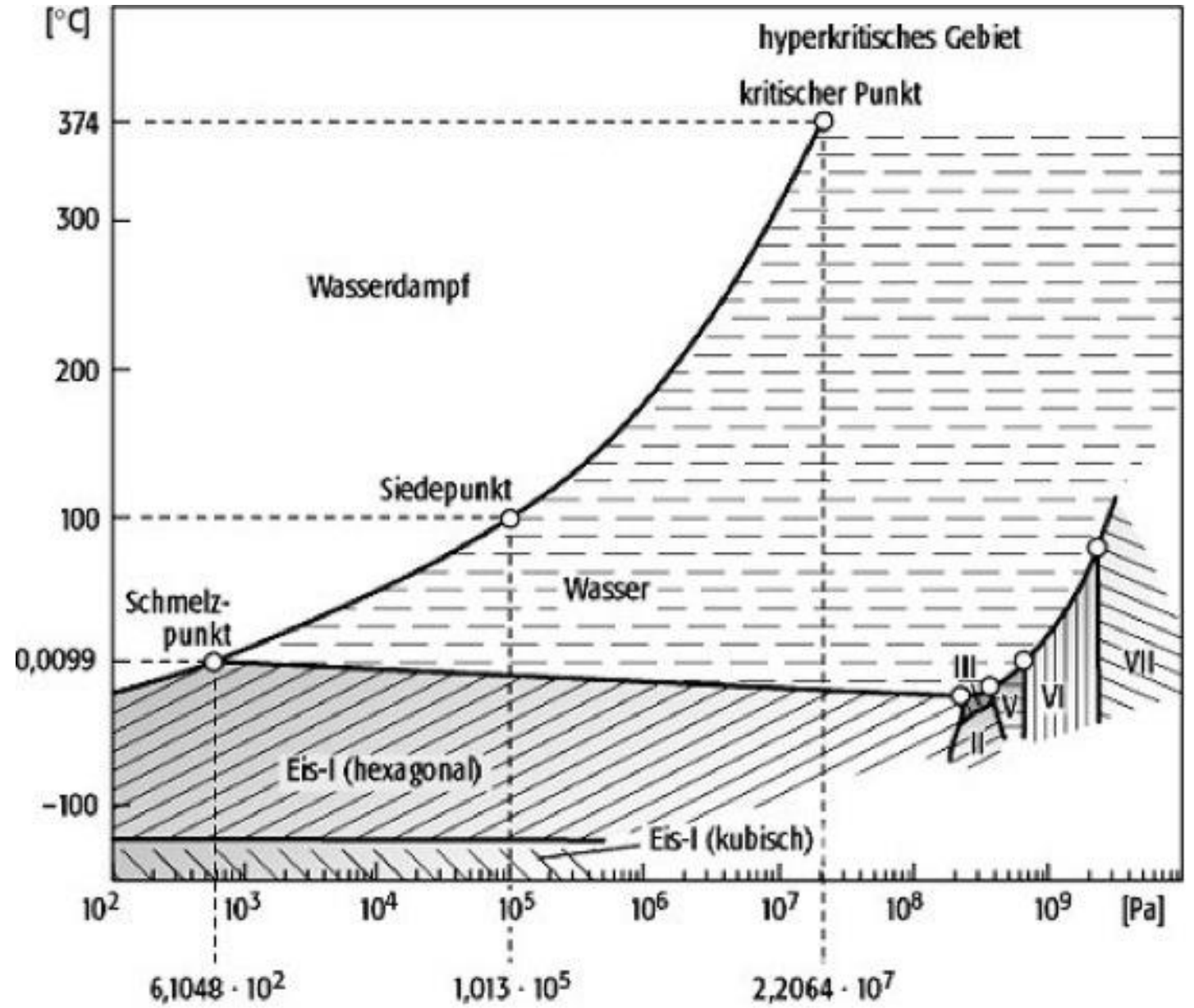
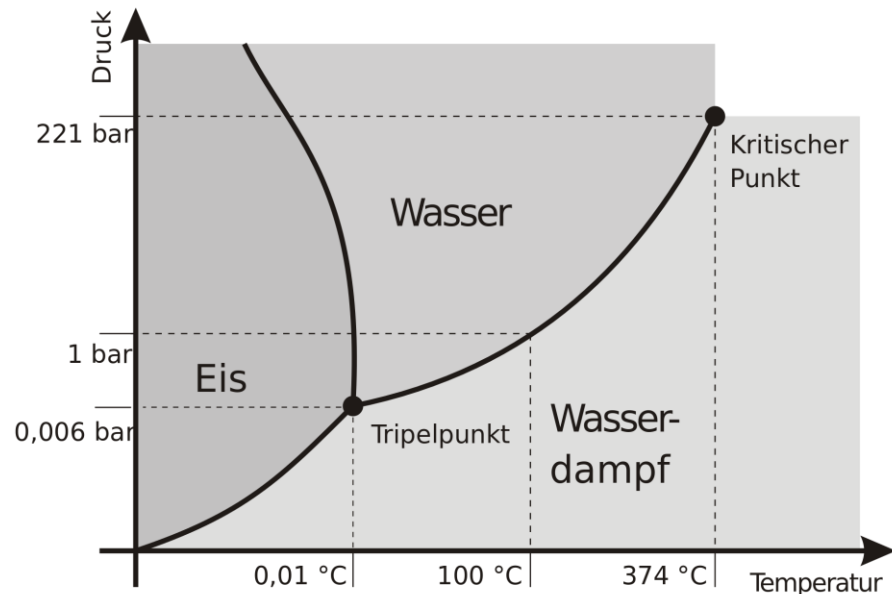
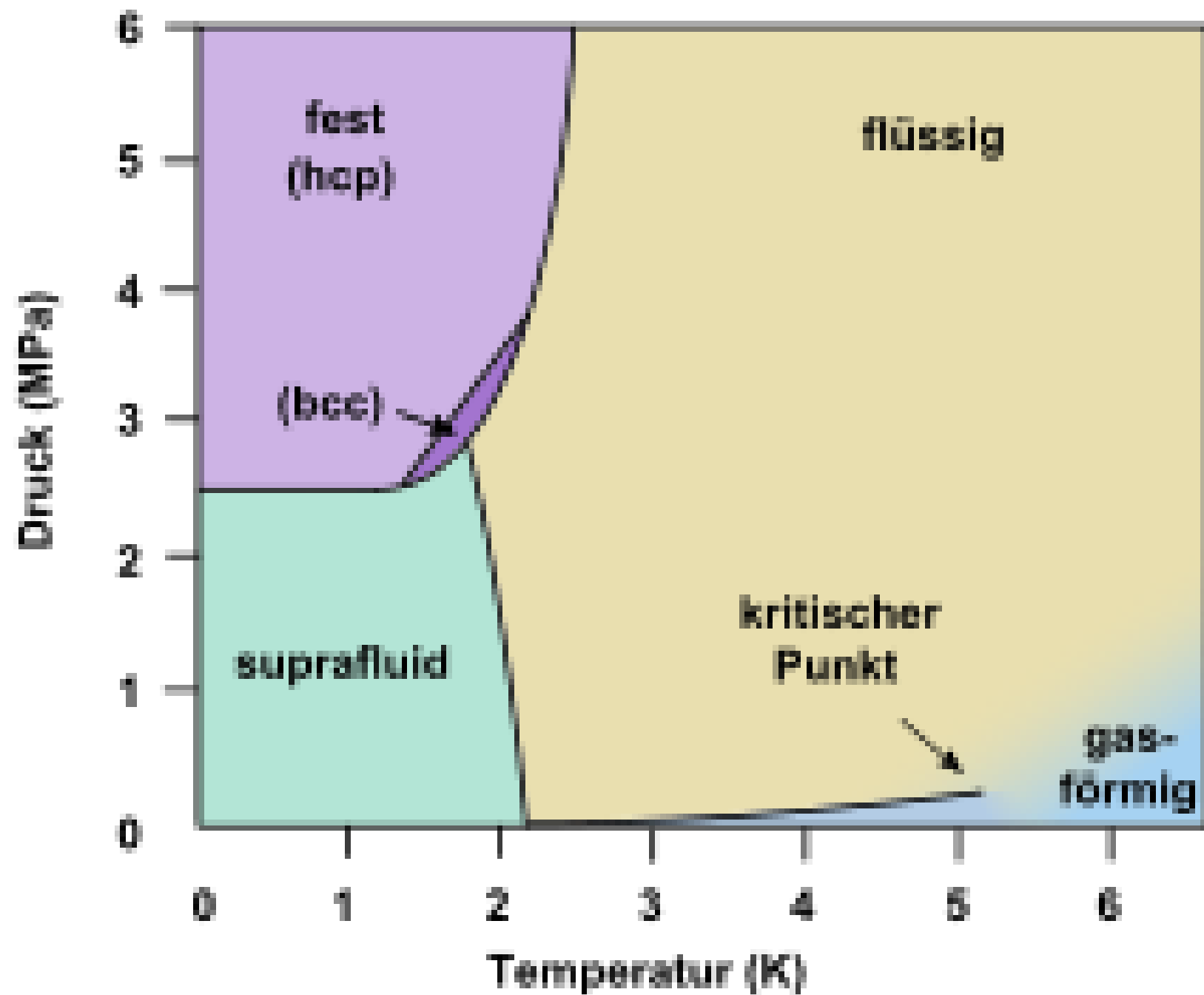


Stoff ohne Anomalie

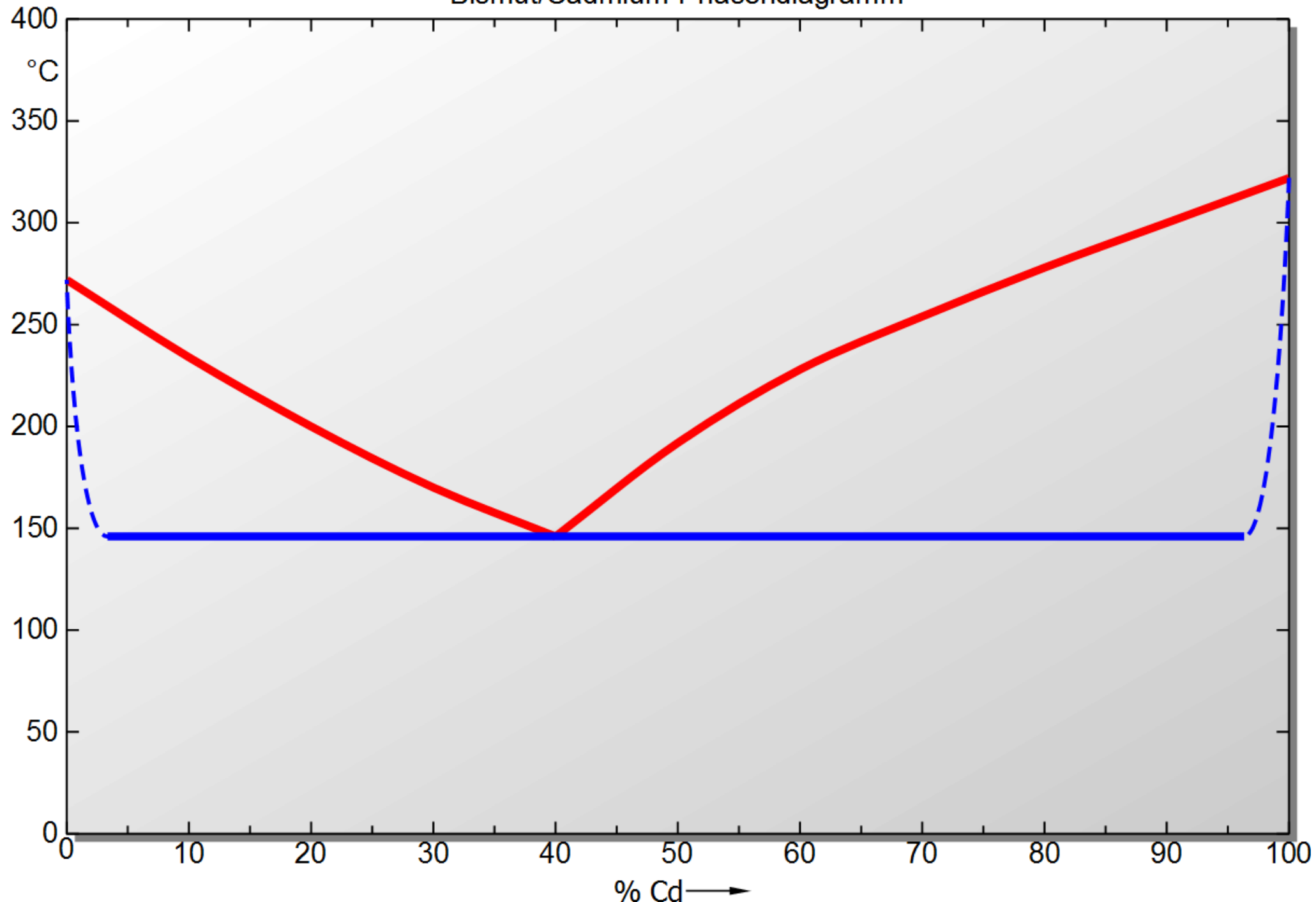


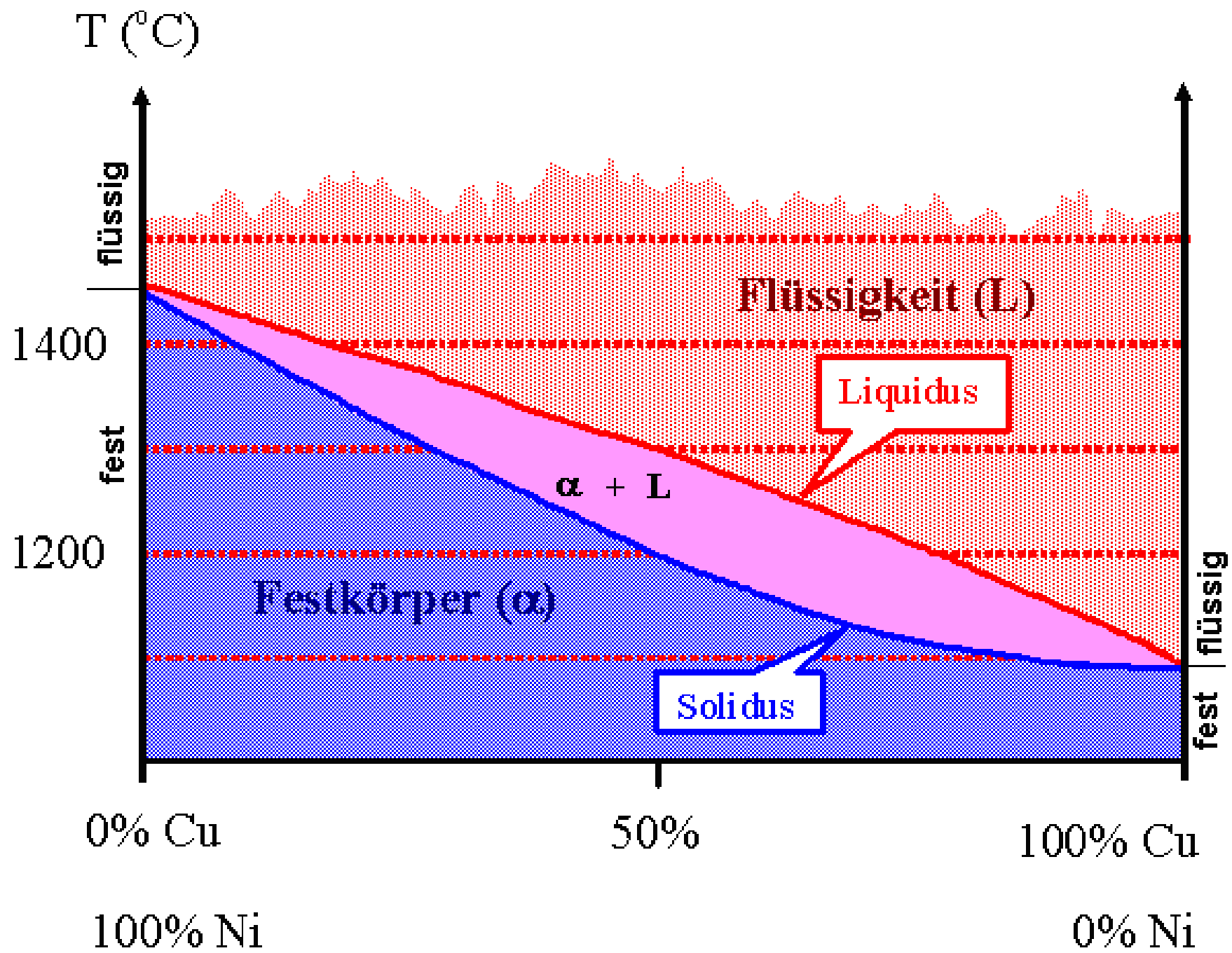
Stoff mit Anomalie (z.B. Wasser)

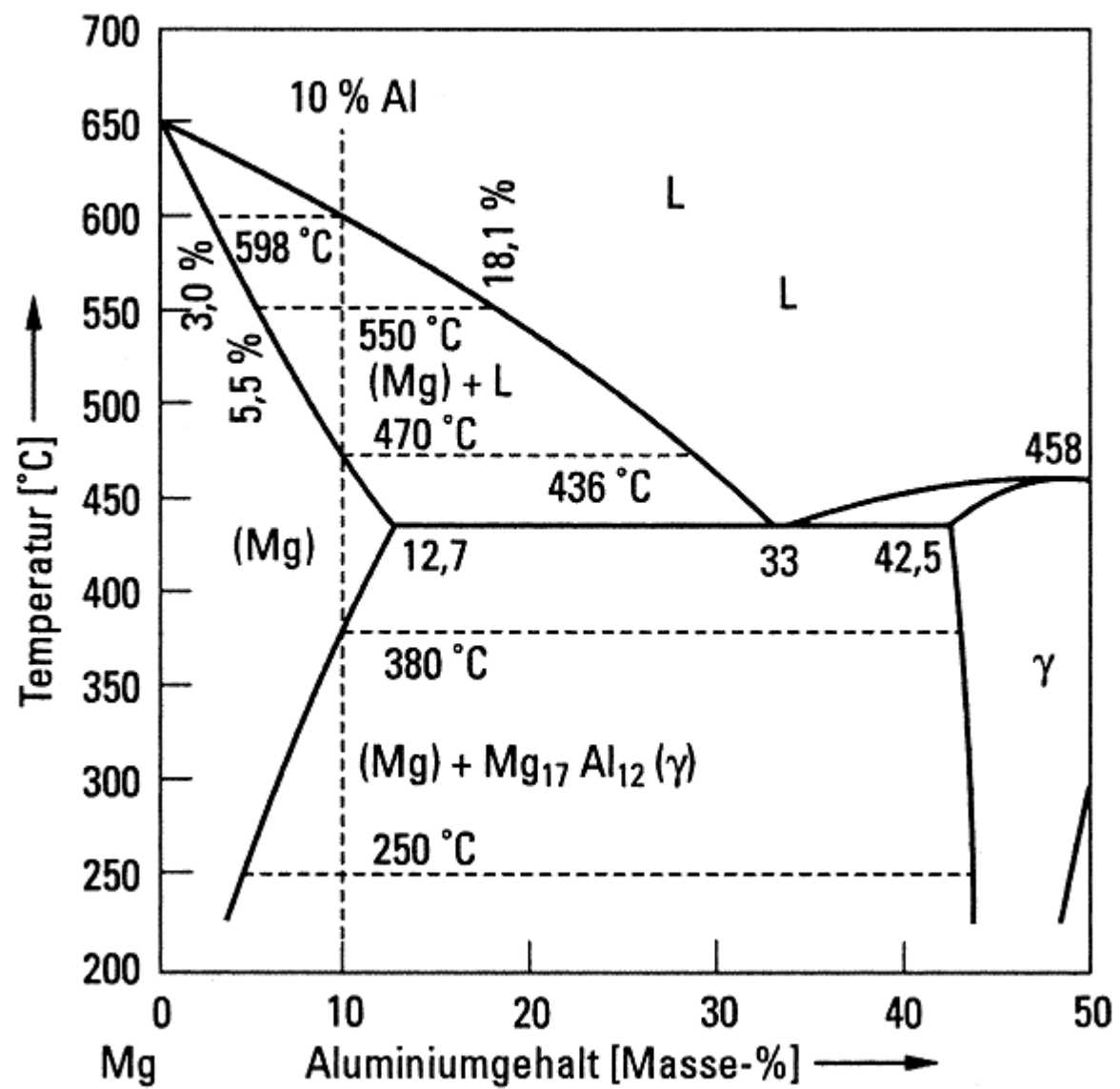


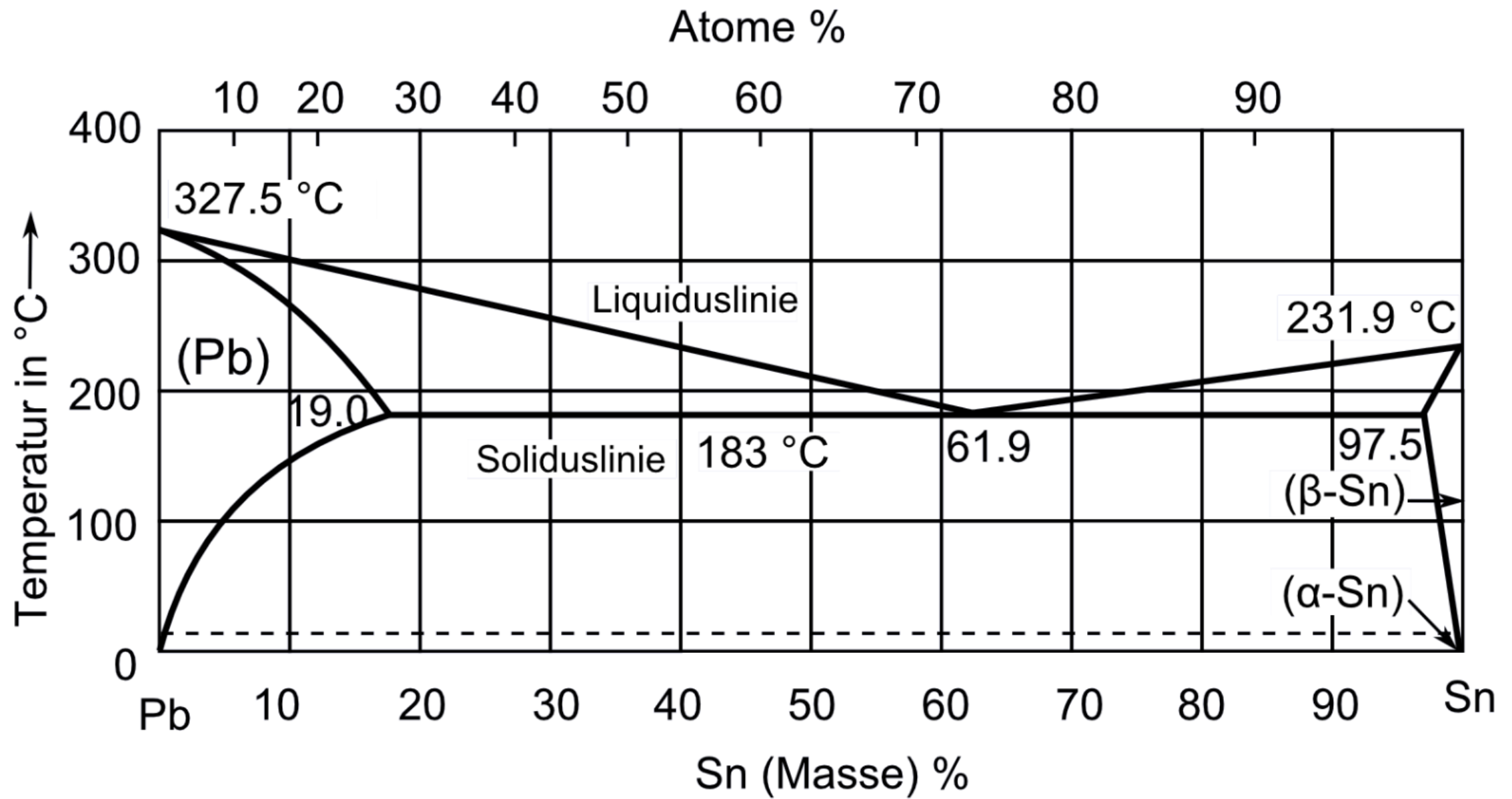


Bismut/Cadmium-Phasendiagramm

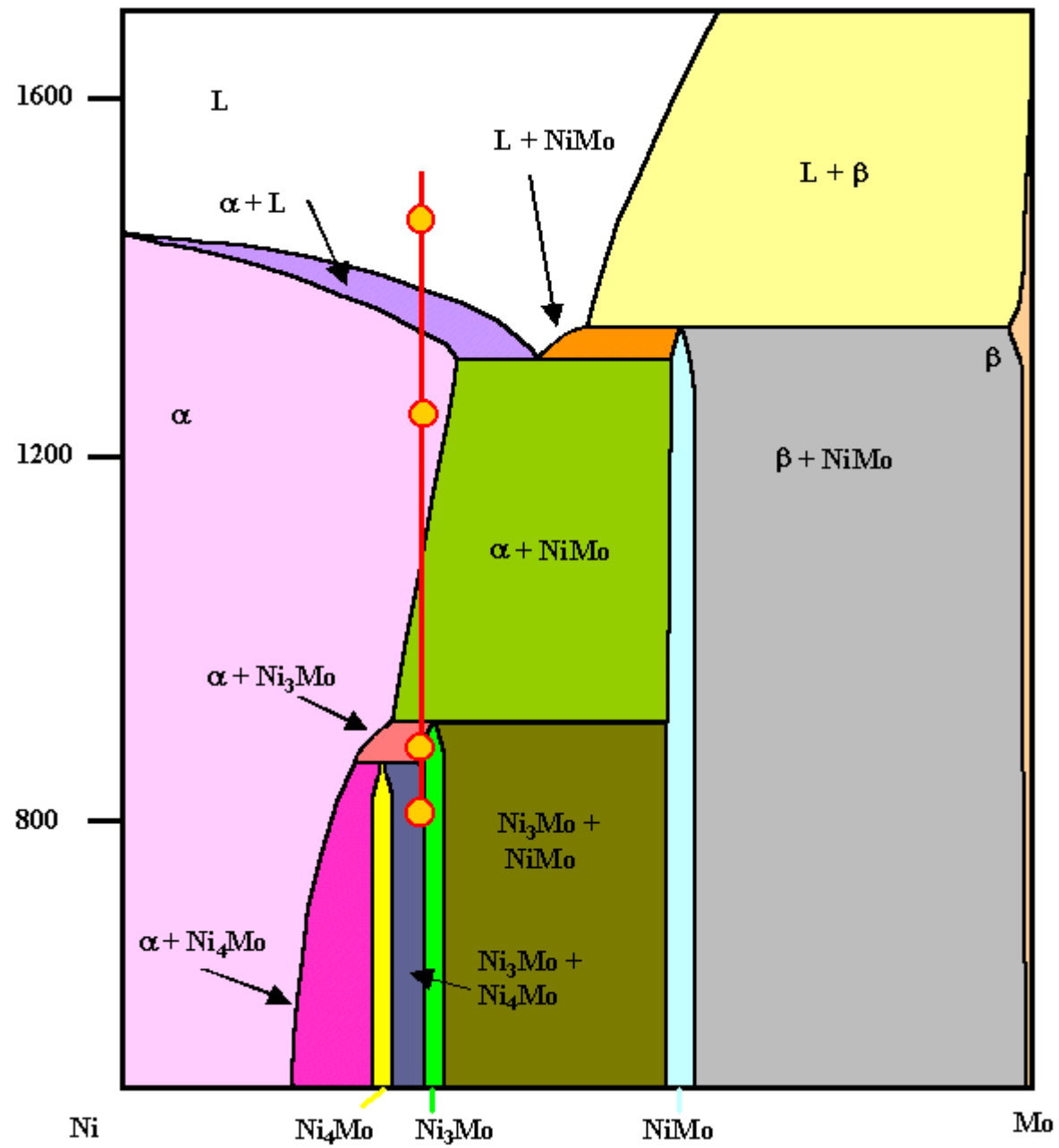


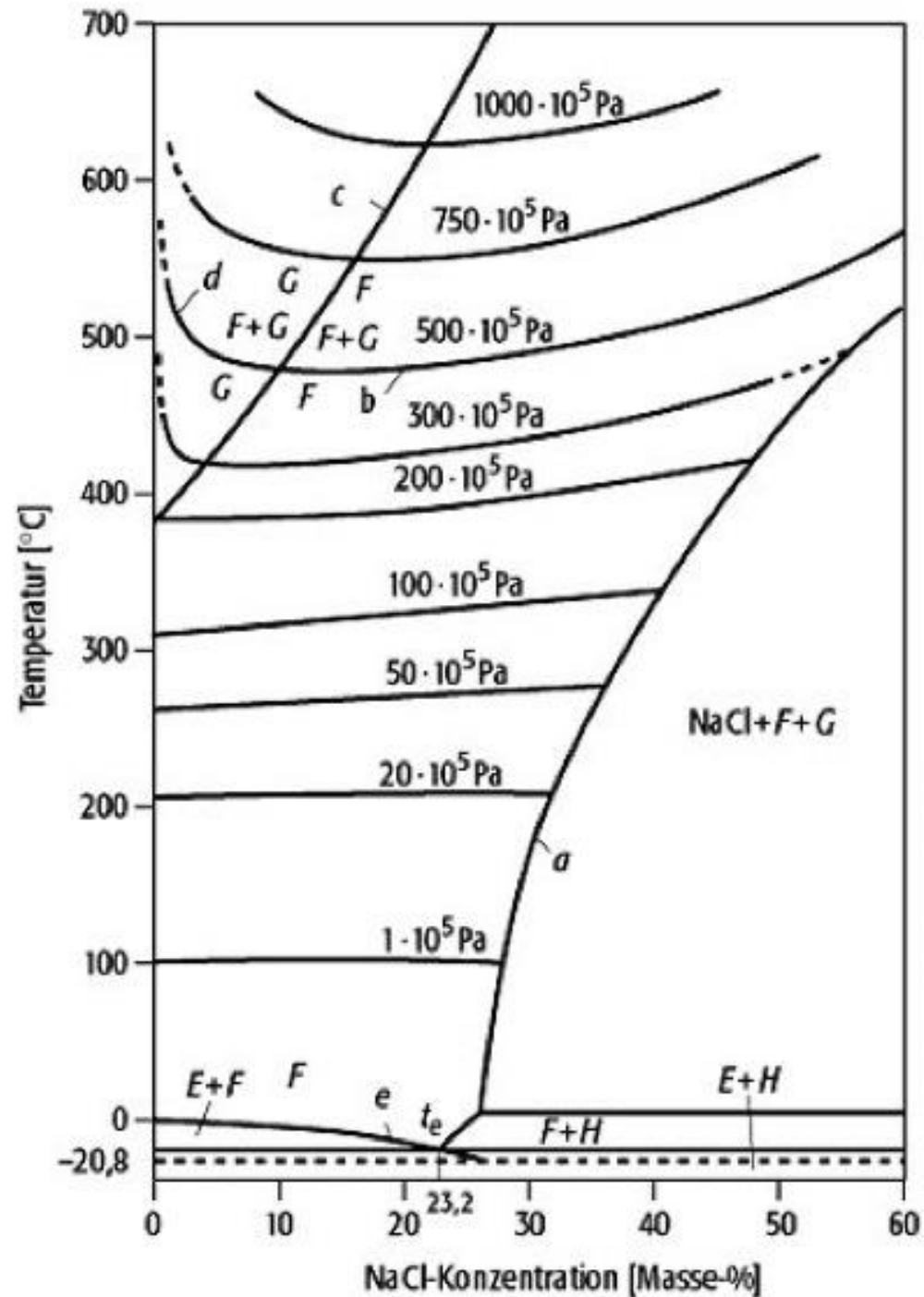






Binäres Zustandsdiagramm von Sn und Pb





- E: Eis
- F: NaCl-Lösung
- H: Hydrohalit
- G: Dampfphase
- t_e: eutektischer Punkt
- a: Dreiphasenkoexistenz (NaCl-fest, F, G)
- b: bubble-point-Kurve
- c: kritische Kurve
- d: Taupunktkurve
- e: Schmelzkurve Eis

